



USB/RS232/RS485

Serial Bluetooth adapter

USB/RS232/RS485 serial port Bluetooth adapter

Although direct serial communication on the market is relatively simple, there is an obvious disadvantage that a wired connection is required, which is usually not convenient. Then wireless communication solutions are needed. The popularization and development of Bluetooth technology provides a low cost for traditional devices. This way of wireless communication. Serial port as a widely used communication interface, through serial port to Bluetooth, wireless communication transmission needs. Gradually show it. This product is a Bluetooth serial port, support broadcast mode, host mode and slave mode, support Bluetooth BLE4.2. Support serial port AT configuration and Bluetooth communication configuration in slave mode, support MODEM contact signal, serial port baud rate up to 1Mbps. Bluetooth slave mode can be set Bluetooth name, manufacturer information and other parameters, can be easily configured through the APP or serial port command, convenient and fast. This product built-in lithium battery, easy to use, easy to carry, widely used in logistics communication, mapping, medical equipment, punch card system and other fields.

1、 This series has 3 different interfaces

Product name	port
IOT5064	USB interface
IOT5064A	RS485 interface
IOT5064B	RS232 interface

2、 Product parameter

1. Support broadcast mode, host mode, and slave mode.
2. Supports serial port AT configuration and Bluetooth transmission configuration.
3. Support Bluetooth adapter and serial port Bluetooth communication.
4. Support the Windows/Linux/Android/iOS system, such as bluetooth host connection.
5. With low power consumption mode, RS232/485 charge lasts 8 hours.
6. The transmission distance can be 100 meters under effective use environment.
7. The transmission power can be adjusted through the AT configuration.
8. The baud rate for asynchronous serial port communication is 115200 for RS232 and 1Mbps for RS485.
9. With status indicator, easy to check the communication status.

Battery charging instructions:

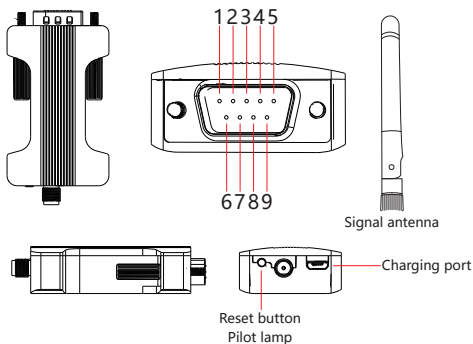
The RS232/485 product has a built-in rechargeable lithium battery. When it needs to be charged, the charging cable is connected to the computer and the Micro port of the product.

When the battery is charged, it will light up the built-in green light tube, which can be seen in the charging port, and the indicator light will be extinguished and the protection will be no longer when the charge is full

Charge the battery to prevent overcharging problems.

3. Interface description

RS232-DB9 pin type

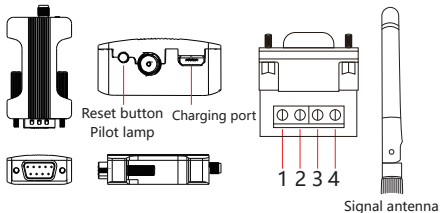


Pin No	Signal
1	DCD
2	RxD
3	TxD
4	DTR
5	CND
6	DSR
7	RTS
8	CTS
9	RI

Indicator working status:

1. Blue light shining: Bluetooth slave mode (to be paired)
2. The blue indicator is off: The Bluetooth is connected
3. Blue indicator light long on: Bluetooth host mode (set to host mode)
4. The blue indicator light flashes for a short time: Bluetooth is receiving and sending data communication

RS-485 pin type

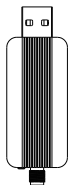


Pin No	Signal
1	RS485 A
2	RS485 B
3	GND
4	DC5V IN

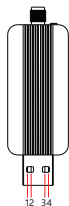
Indicator working status:

1. Blue light shining: Bluetooth slave mode (to be paired)
2. The blue indicator is off: The Bluetooth is connected
3. Blue indicator light long on: Bluetooth host mode (set to host mode)
4. The blue indicator light flashes for a short time: Bluetooth is receiving and sending data communication

USB



Reset button
Pilot lamp



Signal antenna



Pin No	Signal
1	D-
2	D+
3	USB5V
4	GND

Indicator working status:	
1.	Blue light shining: Bluetooth slave mode (to be paired)
2.	The blue indicator is off: The Bluetooth is connected
3.	Blue indicator light long on: Bluetooth host mode (set to host mode)
4.	The blue indicator light flashes for a short time: Bluetooth is receiving and sending data communication

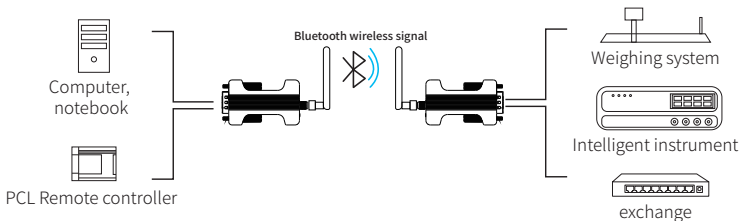
4、Packaging accessories

(1) Products

(2) Built-in lithium battery

五、Bluetooth application solution

Bluetooth adapter connection diagram



6. Setup and use

Scan the left QR code to understand that the Bluetooth adapter can be configured with serial port parameters and data communication, and scan the right QR code to install USB Bluetooth adapter driver



Scan code to download Bluetooth adapter software and configuration



Scan code to download USB Bluetooth adapter driver

Attention:

When using the RS232 Bluetooth serial port adapter or RS485 Bluetooth serial port adapter for the first time, fully charge the device. Charging state, the green light is off, the Bluetooth adapter battery is full.

The USB Bluetooth serial adapter does not need to be charged, and the driver must be installed before use.

Product Warranty Card

Customer Information

Model :	
Date of purchase :	
User telephone :	
User address :	
Distributor :	
Agency address :	
User telephone :	Dealer stamp valid

Intenance Records

Repair times	Date	Fault	Treatment measures	Repair work NO